

# USER AND ADMINISTRATOR MANUAL

## MOBILEVIEW

### DRAFT

Ver: 1.0

Date: 2020/08/19

Author: [gerhard.chvatal@othydromet.com](mailto:gerhard.chvatal@othydromet.com)

## CONTENTS

Introduction.....	3
The structure of the manual.....	3
Part 1, User Manual.....	3
Access to MobileView .....	3
Access via addVANTAGE login screen .....	3
The Public Dashboards View .....	3
The elements of the Dashboards View .....	3
Viewing a Public or Private Dashboard .....	4
Signing in to MobileView.....	7
The Non-Public Dashboards View .....	7
Generic Dashboards .....	8
Fixed data source dashboards.....	8
Part 2, Administrator Manual.....	8
Login .....	8
Creating Dashboards .....	8
Editing Dashboards.....	10
Deleting Widgets .....	10
Editing Widgets.....	10
Changing the Size of Widgets .....	10
Arranging Widgets.....	11
Delete Dashboards .....	11
Duplicate Dashboards .....	12
Different Widget Settings.....	12
Date range .....	12
Data Source .....	12
Public Availability .....	12

## INTRODUCTION

MobileView is an additional way to visualize your data on mobile devices such as phones or tablets. It uses responsive design to display your graphs or table-views regardless of the screen size or orientation of your mobile device. MobileView is available with addVANTAGE Pro 6.8 MobileView License. Please contact your sales partner to get your update and license. Maintenance of addVANTAGE Pro 6.6 LiveData is stopped but will not be removed in the near future.

## THE STRUCTURE OF THE MANUAL

The first part of the manual focuses on the user perspective, while the second part deals with the administrator tasks.

## PART 1, USER MANUAL

### ACCESS TO MOBILEVIEW

MobileView can be accessed via the login screen of addVANTAGE Pro 6.8, or directly if you add `/mobileview` to the URL of your addVANTAGE Pro 6.8 Server.

#### ACCESS VIA ADDVANTAGE LOGIN SCREEN

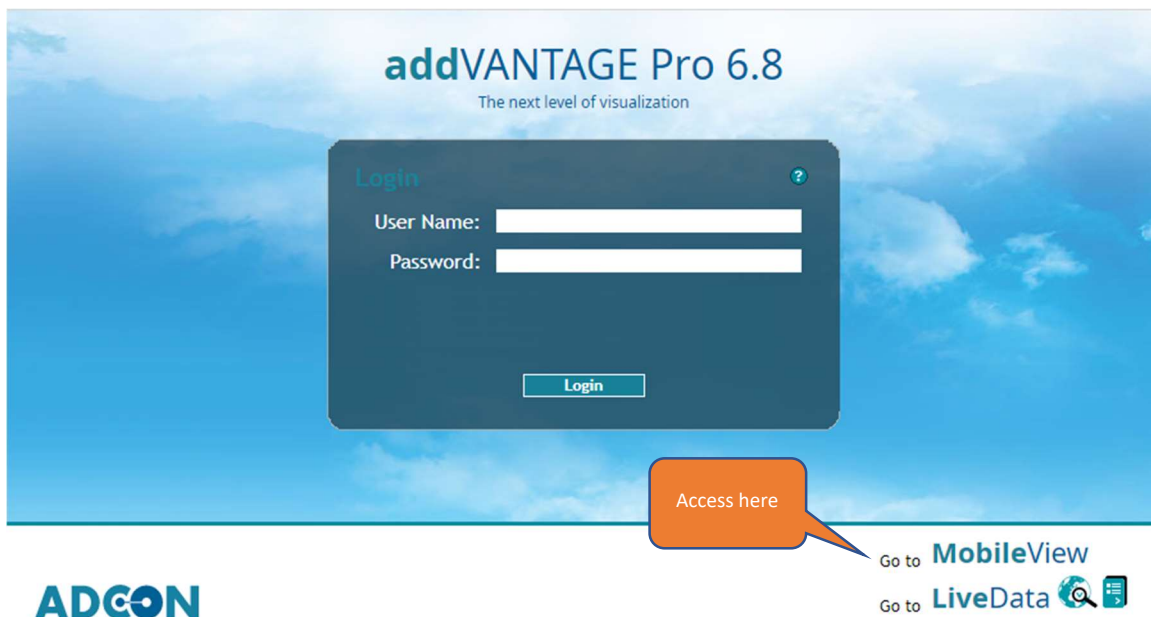


Figure 1, Access MobileView via log in screen

### THE PUBLIC DASHBOARDS VIEW

In the dashboards view, you'll see all publicly available dashboards on your addVANTAGE Pro server, which can be accessed without the need of logging in.

For private dashboards, you'll need to log in by using the LOGIN button in the upper right corner of the Dashboards View.

#### THE ELEMENTS OF THE DASHBOARDS VIEW

The entry point of MobileView will be the dashboards view.

In this view you'll see a list of previously configured dash boards, consisting of following items:

- The name of the dashboard
- The status of the dashboard
- 

A longer list of dashboards will be paginated. You can scroll through a longer list of dashboards by using the elements in the pagination section.

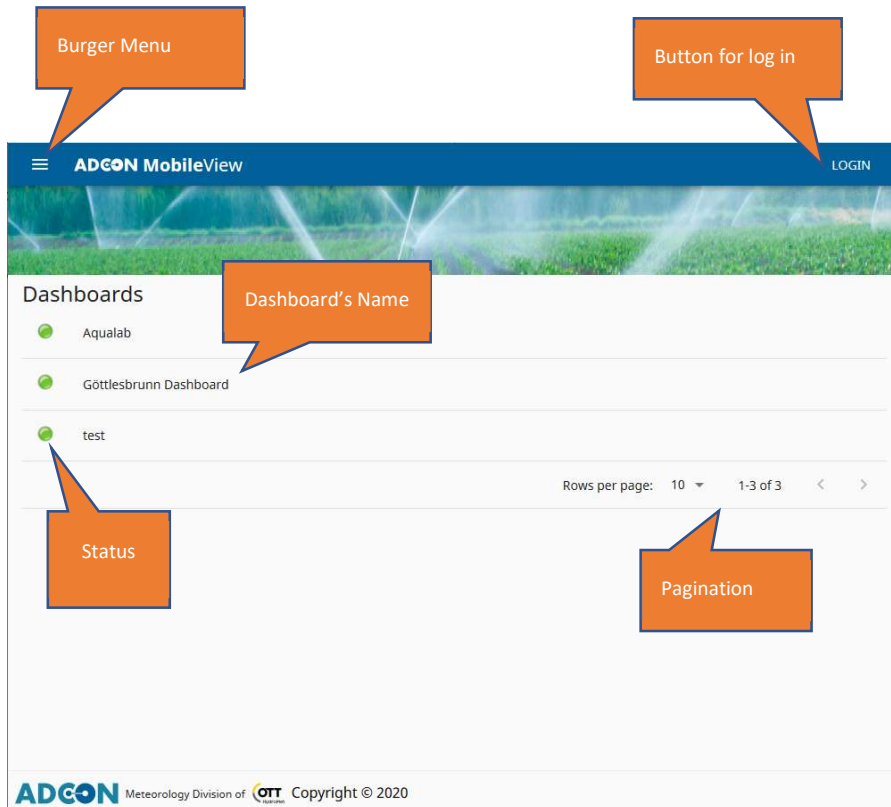


Figure 2, MobileView Dashboards View

Additionally, you can select other functions by using the burger menu in the left upper corner such as:





-  Dashboards
-  Map
-  Alerts
-  Help

Figure 3, The elements of the Burger Menu

You can also log in for administrative tasks or for viewing private dash boards.

---

## VIEWING A PUBLIC OR PRIVATE DASHBOARD

By selecting a list entry in the Dashboards View, you can open it and view the elements behind it. Please log in firstly with the credentials you should have already received from your addVANTAGE admin to have access to your private dash boards.

---

## THE DASHBOARD ELEMENTS

A dashboard consists of elements such as:

- A selector for Start- and End-Date
- Graphs
- Data Lists
- Event Lists
- Maps
- Virtual Instruments
- Last Data Displays

---

## DASHBOARD START DATE AND DATE RANGE

When you've opened a dashboard, you can select the start date and the date range for the data you want to visualize.

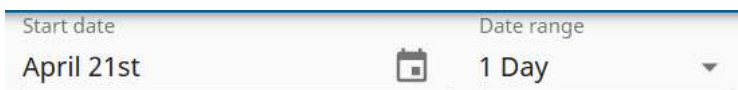


Figure 4, The Selector for Start- and End-Date

All corresponding dashboard elements will show measurement values beginning with the Start date and showing the data within the Date range.

---

## GRAPHS

Graphs can be used to visualize your sensor's data over time.

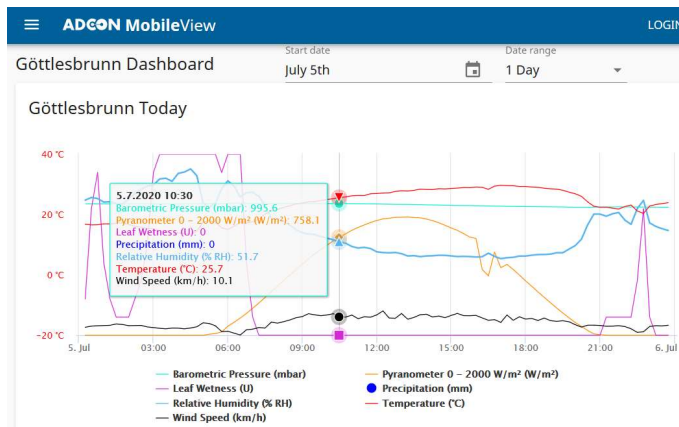


Figure 5, The Graphs Element

Date, time and the corresponding measurement values can be displayed in a small overlay box when pointing on the graph. A legend to identify the measurement values is shown below the graph.

The displayed values will be expanded to the allocated space of the graph when the available data range is shorter than the selected range.

---

## DATA TABLES

A Data List shows your measurement data as a list of values.

Table

Time	Barometric Pressure	Pyranometer 0 - 2000 W/m <sup>2</sup>	Leaf Wetness	Precipitation	Relative Humidity
05.07.2020 23:45	991.6	0	0	0	57.88
05.07.2020 23:30	991.58	0	0	0	58.89
05.07.2020 23:15	991.62	0	0	0	60.13

The values will be listed in descending order, so you will see the most recent data in the first (top) line. You can scroll through a longer list.

## EVENT LISTS

Events will be shown in a list, like a data list.

Events

Time	Message
No data	

Figure 6, The Events list

## MAPS VIEW

The geographical position of your station can be visualized by using a Map View

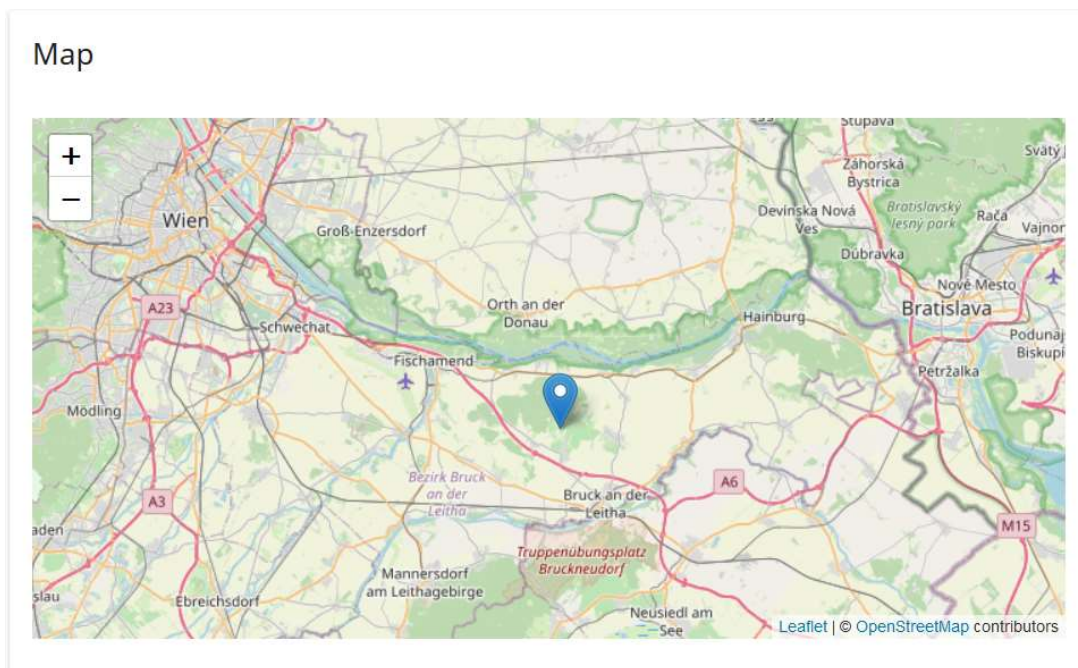


Figure 7, The Map View

The Map View offers to inspect the current measurement data by selecting the symbol which represents your weather station on the map.

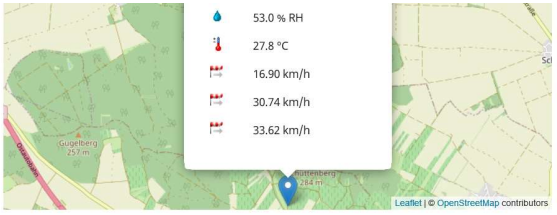


Figure 8, The current data pop-up

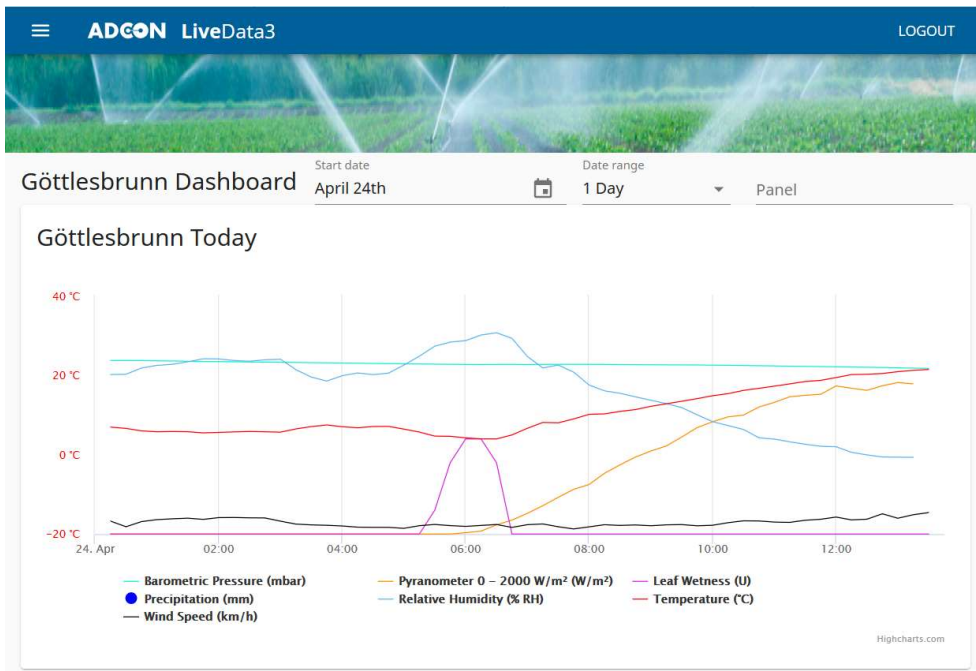
## SIGNING IN TO MOBILEVIEW

The non-public area is only accessible if you have got your personal credential from your addVANTAGE Pro administrator. To sign in enter your username and password in the corresponding fields and select the SIGN IN button as shown below.

Figure 9, Sign in screen

## THE NON-PUBLIC DASHBOARDS VIEW

After signing in, the dashboard from your last session will be shown automatically.



By using the Burger menu, you have access to other functions and dashboards.

## GENERIC DASHBOARDS

With data source selection

## FIXED DATA SOURCE DASHBORDS

## PART 2, ADMINISTRATOR MANUAL

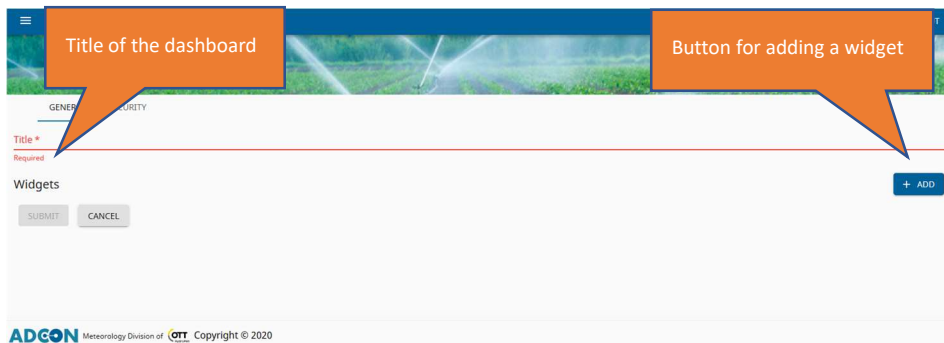
## LOGIN

As an administrator you log in the same way as any other user. The only difference is that you need the role “Admin” in addVANTAGE.

## CREATING DASHBOARDS

In the burger menu select Dashboards.

In the list of Dashboards click CREATE.



Enter a title.

Click on ADD to add a so-called widget.

Add Widget

Title

Type \*

Date range

Default

Data Source

Layout

A widget can be:

- A chart
- A table
- An event list
- A last value
- A Gauge (with the last value)

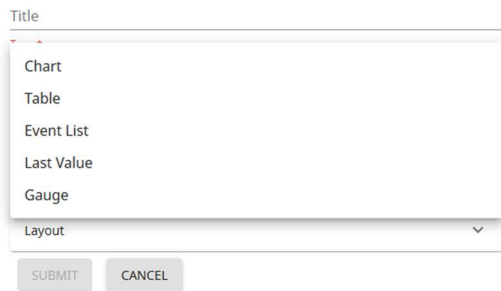
First let's add a simple chart:

You can add a title, but that's optional.



As Type select Chart.

Add Widget

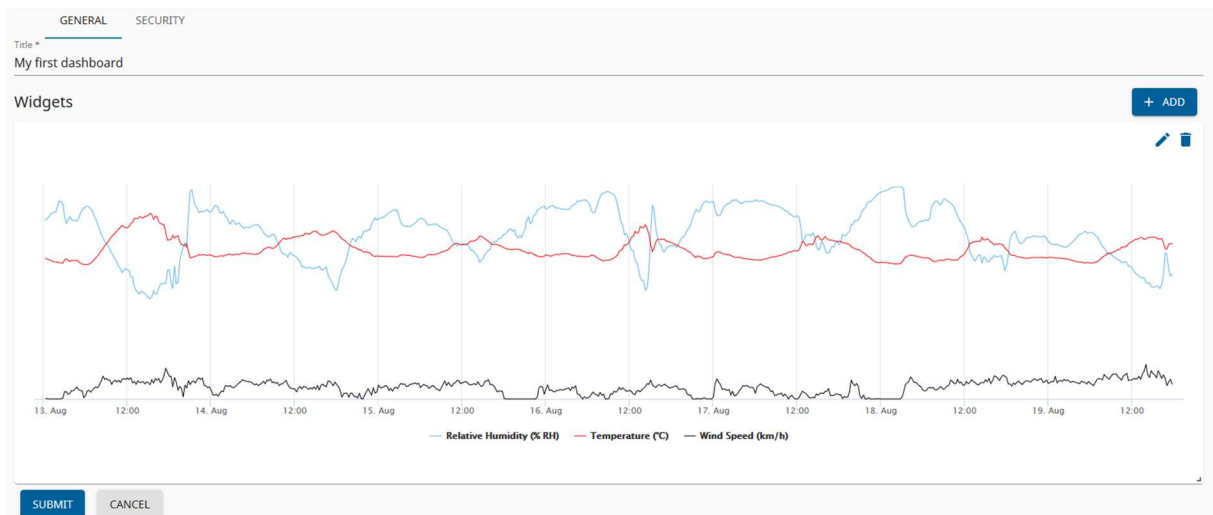


As Date range leave Default.

As Data Source select a panel that you have created in addVANTAGE.



The check box just indicates what a panel is. A selected panel gets a light blue background.



Click a second time on ADD.

This time select table as type.

As Date range leave again Default.

As Data Source select the same addVANTAGE panel that you have used above.

Click on SUBMIT.



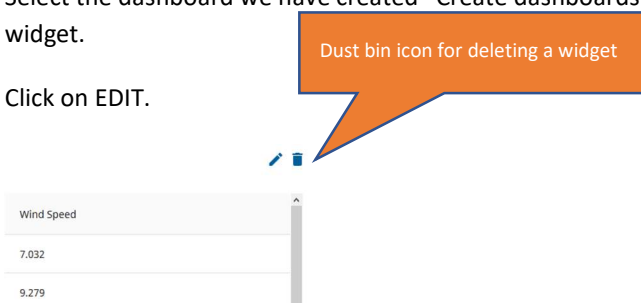
Click on again on SUBMIT. The dashboard is saved, and you are back in the list of dashboards, where you can find you newly created dashboard. If you do not see the dashboard, scroll down or go to the next pages of the list. The dashboards are sorted in alphabetic order.

## EDITING DASHBOARDS

### DELETING WIDGETS

Select the dashboard we have created “Create dashboards” chapter (a dashboard with a chart and a table widget).

Click on EDIT.



Click on the dust bin of the widget and confirm the delete operation by clicking DELETE.

Click on SUBMIT. That saves the updated dashboard, and you are back in the list of dashboards.

### EDITING WIDGETS

Select a dashboard.

Click on EDIT.

Click on the pencil.

Perform any change.

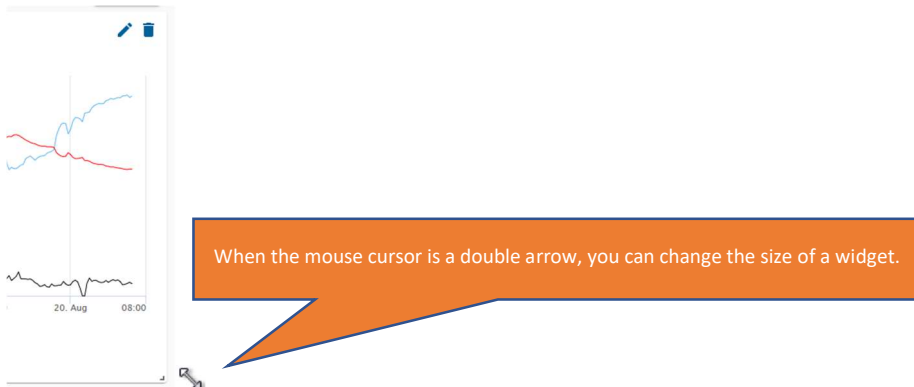
Click in the Update Widget window on SUBMIT.

Click also in the dashboard on SUBMIT.

### CHANGING THE SIZE OF WIDGETS

Select a dashboard.

Click on EDIT.



Move with the cursor to the lower left corner of a widget until the mouse pointer changes to a double arrow.

Drag and drop the lower left corner in order to change the size of a widget.

Click SUBMIT to save the dashboard.

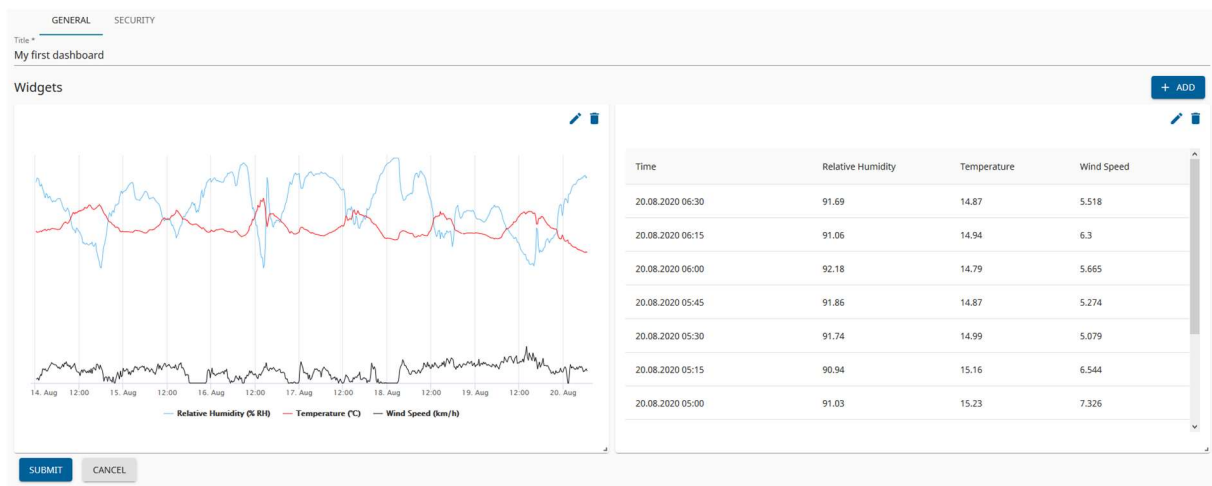
---

## ARRANGING WIDGETS

Select a dashboard.

Click on EDIT.

Drag and drop a widget to a new place. During dragging the widget, you see by a background rectangle where the widget will be placed.



Click SUBMIT to save the dashboard.

## DELETE DASHBOARDS

Select a dashboard.

Click on DELETE.

Confirm the delete operation by again clicking on DELETE.

## DUPLICATE DASHBOARDS

Select a dashboard.

Click on DUPLICATE. You are now in the edit modus of a copy of the selected dashboard.

Change the title.

Change widgets or parameters of widgets like the data source.

Click SUBMIT to save the dashboard.

## DIFFERENT WIDGET SETTINGS

### DATE RANGE

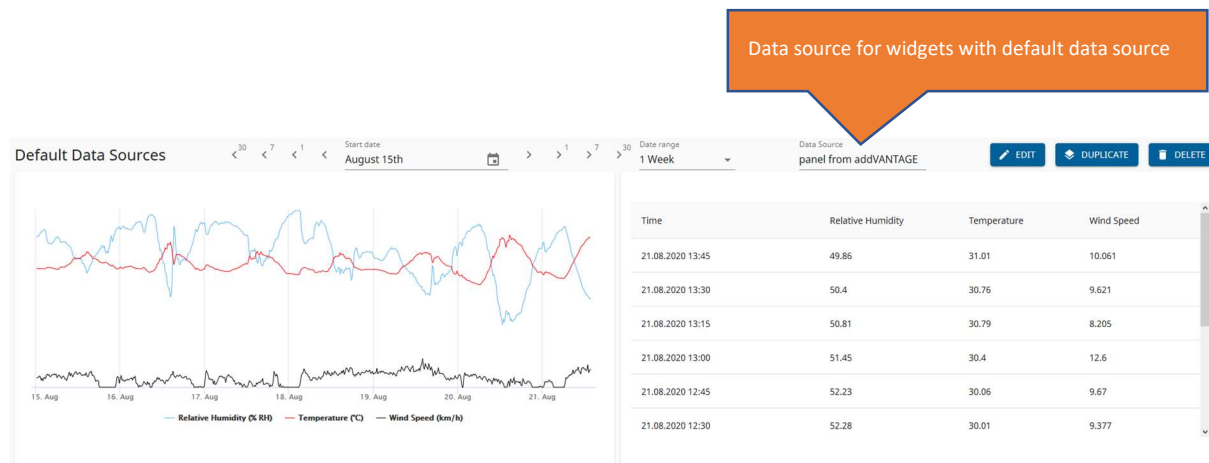
If the date range of a widget is set to default, the date range is taken from that of the dashboard.

If the date range is set to a value, the widget has always this date range, regardless of the date range of the dashboard.

### DATA SOURCE

If the data source of a widget is set, this widget is linked to the according panel in addVANTAGE. Thus, widgets can have different data sources in a dashboard.

If the data source of a widget is set to default, in the dashboard appears a data source field. This data source is than taken for all widgets that have a default data source.



You can even mix widgets with both types of data sources, but that is NOT recommended.

## PUBLIC AVAILABILITY

Similar to addVANTAGE, you can make dashboards publicly available.



Select a dashboard.

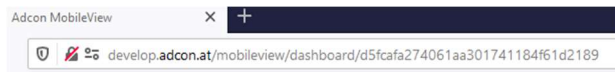
Click on EDIT.

Click on the SECURITY tab.

Select Public Available.

Click on SUBMIT.

In order to include a dashboard in your web page do the following:



In the MobileView copy the URL of the dashboard.

In your web page include the dashboard with the following html snip let:

```
<iframe src="http://yourServer/mobileview/dashboard/d5fcfa274061aa301741184f61d2189" height="800" width="1200"></iframe>
```

Make sure that the Dataview panel in addVANTAGE is also public available.